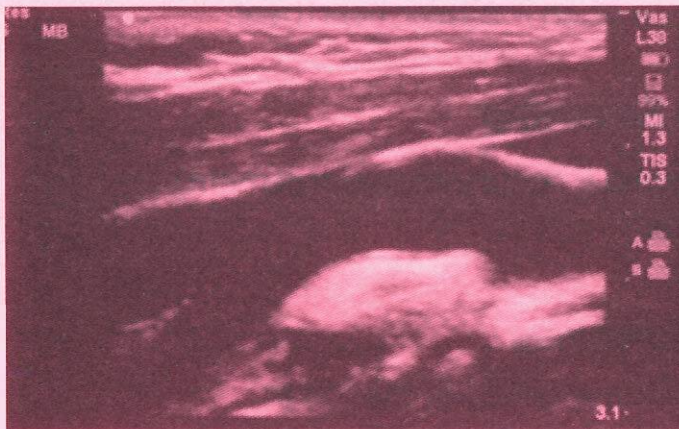


# Take a step toward staying **Healthy & Active**

Life Line Screening goes beyond regular checkups to provide a more thorough look at your health.

**Be Smart: Do More For Your Cardiovascular Health**

**No Plaque Buildup**



**Plaque Buildup**



Advanced ultrasound technology looks inside your arteries for signs of plaque buildup. That's why **9 out of 10 cardiovascular doctors** support preventive screenings for those with key risk factors.\*

Adults age 50+ and those 40 and older with one or more risk factors for cardiovascular disease should be screened.

\*Key Risk Factors include: \*High blood pressure, high cholesterol, diabetes, obesity, smoking, family history.

We are coming to your neighborhood.

**Where: Hudson Oaks - Lakeshore Baptist Church**

**When: Monday, November 7, 2022**

To register for your appointment and to receive the special discount,  
please call **1-800-324-1851** or visit **LLSA.SOCIAL/HS**

## Trusted by Hospitals Nationwide.

Life Line Screening has partnered with over **100 hospitals** across the country and has conducted over **10 million screenings** since 1993.



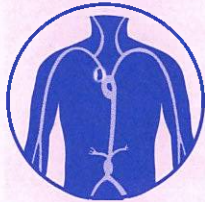
### ***Carotid Artery (Plaque) Screening***

Ultrasound scan of the carotid arteries that screens for buildup of fatty plaque — one of the leading causes of strokes.



### ***Heart Rhythm Screening (Atrial Fibrillation)***

A quick and easy test using a 6-lead EKG placed on the arms and legs to identify the presence or absence of an irregular heartbeat.



### ***Abdominal Aortic Aneurysm Screening***

Ultrasound screening for an abdominal aneurysm (enlargement) that could lead to a ruptured aorta.



### ***Peripheral Arterial Disease Screening***

Evaluates for peripheral arterial disease (PAD) in the lower extremities, which increases the risk of cardiovascular disease.<sup>1</sup>



### ***Osteoporosis Risk Assessment***

Ultrasound screens the shin bone for bone mass density. Osteoporosis is painless and silent in its early stages.

**5 Screenings for Only \$149**  
**Special Package Pricing**

<sup>1</sup> No single screening can detect all risk factors for all conditions, such as and including the presence of coronary artery disease.

Screening results are provided to you in about 14 days. We direct all participants with abnormal results to take the report to their physician. Appropriate modification of risk factors (including high blood pressure, smoking, heart disease, diabetes and poor diet) is also necessary for cardiovascular disease prevention. Our screenings cannot detect all forms of stroke risk or cardiovascular disease. All tests are for screening purposes only. You should consult with your personal physician regarding your screening results. Price does not include any applicable review fees. Insurance Note: Life Line Screening does not participate in the Medicare program and the cost of our screening services is not covered or reimbursable by Medicare. Life Line Screening does not file insurance claims nor provide referrals to any physician's group or hospital. If you are unable to attend the screening for any reason whatsoever, we will issue a gift card for the full amount to be used by you, or anyone you choose, for future screening services.